



KNOEDLER®

MANUFACTURIERS CANADA, LTEE

POWER-CHIEF

With Air-Suspension

for RV's & Trucks

STANDARD FEATURES:

- Power Electric Recline Function
- Power Electric Fore & Aft Adjustment.
- 23" Wide Seat Cushion
- 3-Position Seat Cushion Extension & Tilt
- FAS System
 - Air lumbar support system
 - Side-Bolster Adjustment System
- Storage Tray
- Poly-Dynamic Air-Suspension™
 - Integrated Isolator
 - 6" height adjustment

FAS system includes:

Triple chamber air-lumbar support system to adjust the posterior pelvic tilt, which is important for proper posture.

Dual chamber side bolster support system.

Allows for adjustment of the side bolsters to provide lateral support.



Part # shown: 98PO-L82MH0S13

CONTACT US AT:
INFO@KNOEDLER.COM
TEL: 450-445-4777

WWW.KNOEDLER.COM

KNOEDLER®

MANUFACTURIÈRS CANADA, LTÉE

POWER-CHIEF Part Numbers

DESCRIPTION	PART NUMBER										
Standard MID BACK, Bellow, isolator	98	P	O	-	S	72	MB	0	X	01	
Mid Back & Head Rest							MH				
Add ProBax System	12										
Add FAS				-	L						
Add arms						82					
Add heat								H			
Matrix									X		
Mordura									D		
Synthetic Leather									S		
Genuine Leather									L		
Not Upholstered										00	
Black										01	
Brown										02	
Tan										03	
Gray										05	
Red										06	
Black/Brown										12	
Black/Tan										13	
Black/Gray										15	
Black/Red										16	
Add Options:											
Massage System	730113-000										
Memory Foam	731152-000										
Cushion Ventillation & Heat System	730114-000										
Swivel System (press button actuated)	731153-000										

CONTACT US AT:
 INFO@KNOEDLER.COM
 TEL: 450-445-4777

WWW.KNOEDLER.COM



O P T I O N S

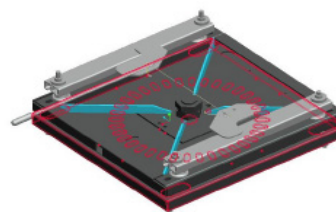
My name is Kay Lameyer, and my husband Jim and I are the owners of Blue Thunder Trucking. You might not remember us, but we have never forgotten you.

A little over two years ago, we were working with our Kenworth T800 Tandem Dump Truck in our hometown of Colorado Springs, CO. We were considering closing our business because Jim was in so much pain. His head, back and knee hurt daily. We tried everything from therapy, exercise, and medication. We even moved to the Arizona/Nevada area hoping the warm climate would help him.

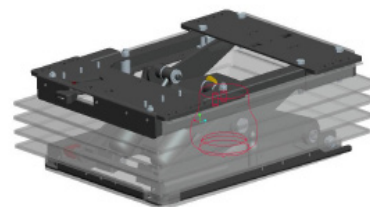
The real answer came for us after we attended the 2006 Truck Show in Las Vegas, NV. Knoedler Manufacturers had their seats on display. They told us about the quality and craftsmanship of a Knoedler seat, and we purchased The Chief seat after the show.

This was the best investment we ever made. The seat was installed in half an hour, and Jim noticed the difference immediately. He has felt incredible relief since the first day. Blue Thunder is a strong company again, and Jim tells

**Swivel Kit Remote Actuating
(excluding Slides)
Part #: 731153-000**



**HD-Suspension Upgrade
Part #: 730148-000**



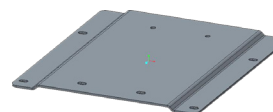
**Massage System Kit
8-Motors
Part #: 730113-000**



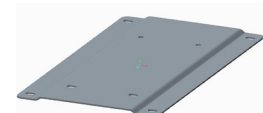
**Memory Foam Kit
(Can not be combined with
HEAT and HEAT & COOL
Systems)
Part #: 731152-000**



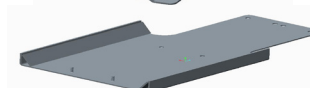
**International Adaptor:
Part #: RR07-INTER-000**



**Volvo Trucks Adaptor
Part #:RR00-22VO-000**



**Freightliner EZ Rider Adaptor
Part #: RR12-FL01-000**



**Kenworth & Peterbilt New
2.1 Meter Cab Adaptor
Part #: RR15-KWPB-000**

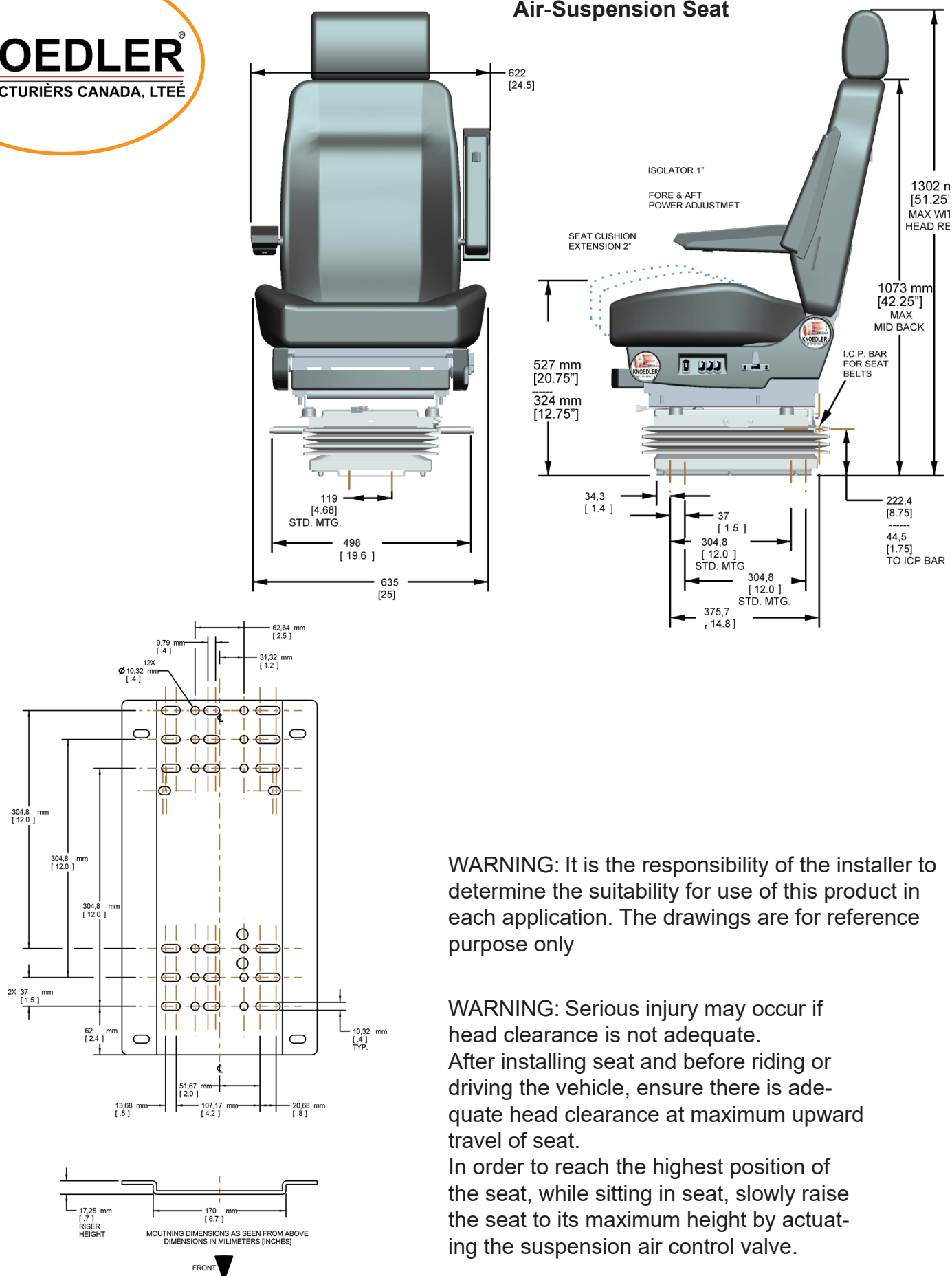


**CONTACT US AT:
INFO@KNOEDLER.COM
TEL: 450-445-4777**

WWW.KNOEDLER.COM

KNOEDLER
MANUFACTURIERS CANADA, LTEE

Power-Chief Air-Suspension Seat



WARNING: It is the responsibility of the installer to determine the suitability for use of this product in each application. The drawings are for reference purpose only

WARNING: Serious injury may occur if head clearance is not adequate. After installing seat and before riding or driving the vehicle, ensure there is adequate head clearance at maximum upward travel of seat. In order to reach the highest position of the seat, while sitting in seat, slowly raise the seat to its maximum height by actuating the suspension air control valve.