

KNOEDLER®

MANUFACTURIÈRS CANADA, LTEÉ

AIR-CHIEF

Standard Features:

- Ergonomic Design
- Tall Back Seat Cushion
- Front adjustable Armrest (rattle free)
- Fully Reclining Backrest
- 4x Air-Lumbar Support System
- Seat Cushion Extension & Tilt .
- 9" Fore & Aft Tracks
- Poly-Dynamic Suspension System™
- Integrated Isolator
- Isolator Lock Out
- ICP (Seat Belt Interconnection Points)-move with Suspension & Isolator for belt comfort
- Rip Resistant Double Stitching
- Bellow (Suspension Cover)

Options: see ->Part # System & Options Pages

FAS OPTION:

Foam Adjustment System (FAS)

Adjusts foam bolsters to help fit the body.
FAS system includes:

Triple chamber Air-lumbar support system to adjust the proper posterior pelvic tilt, which supports posture.

Side-bolster support system. It allows to adjust the width of the seat back foam, and control the amount of support on each side.

Part # shown:98CH-L82TB0S15
+730147-000 ProBax



CONTACT US AT:
INFO@KNOEDLER.COM
TEL: 450-445-4777

WWW.KNOEDLER.COM

Air-Chief Part Numbers

DESCRIPTION	PART NUMBER									
Standard Tall Back (bellow, isolator)	98	C	H	-	S	72	TB	0	X	01
Add ProBax System	12									
Add FAS				-	L					
Add FAS and lower seat by 2"		L	R	-	L					
Increase Cushion width to 23" (Not available with ProBax)			W							
Add arms						82				
Mid Back & Head Rest										
Remove headrest										
Add heat								H		
Matrix									X	
Mordura									D	
Synthetic Leather									S	
Genuine Leather									L	
Black										01
Brown										02
Tan										03
Gray										05
Red										06
Black/Brown										12
Black/Tan										13
Black/Gray										15
Black/Red										16
Add Options:										
ProBax Kit	730147-000									
Massage	730113-000									
Memory Foam	731152-000									
Heat	730130-000									



O P T I O N S

My name is Kay Lameyer, and my husband Jim and I are the owners of Blue Thunder Trucking. You might not remember us, but we have never forgotten you.

A little over two years ago, we were working with our Kenworth T800 Tandem Dump Truck in our hometown of Colorado Springs, CO. We were considering closing our business because Jim was in so much pain. His head, back and knee hurt daily. We tried everything from therapy, exercise, and medication. We even moved to the Arizona/Nevada area hoping the warm climate would help him.

The real answer came for us after we attended the 2006 Truck Show in Las Vegas, NV. Knoedler Manufacturers had their seats on display. They told us about the quality and craftsmanship of a Knoedler seat, and we purchased The Chief seat after the show.

This was the best investment we ever made. The seat was installed in half an hour, and Jim noticed the difference immediately. He has felt incredible relief since the first day. Blue Thunder is a strong company again, and Jim tells

Swivel Kit Remote Actuating
(excluding Slides)
Part #: 731153-000



HD-Suspension Upgrade
Part #: 730148-000



Massage System Kit
8-Motors
Part #: 730113-000



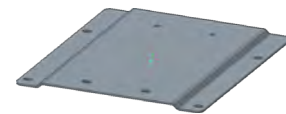
Memory Foam Kit
Part #: 731152-000



Seats Come with Standard Universal Adaptor that fit many Class 8 Legacy Models incl.: Kenworth, Peterbilt, Freightliner, Mack, International, Navistar, Volvo, Western Star and others.

Please see list below (and next page) for adaptors needed for described newer Truck Models:

Freightliner Cascadia:
Part #: RR16-CASCD-000



International Adaptor:
Part #: RR07-INTER-000

Volvo Trucks Adaptor
Part #:RR00-22VO-000



Freightliner EZ Rider Adaptor
Part #: RR12-FL01-000



Kenworth & Peterbilt New
2.1 Meter Cab Adaptor
Part #: RR15-KWPB-000

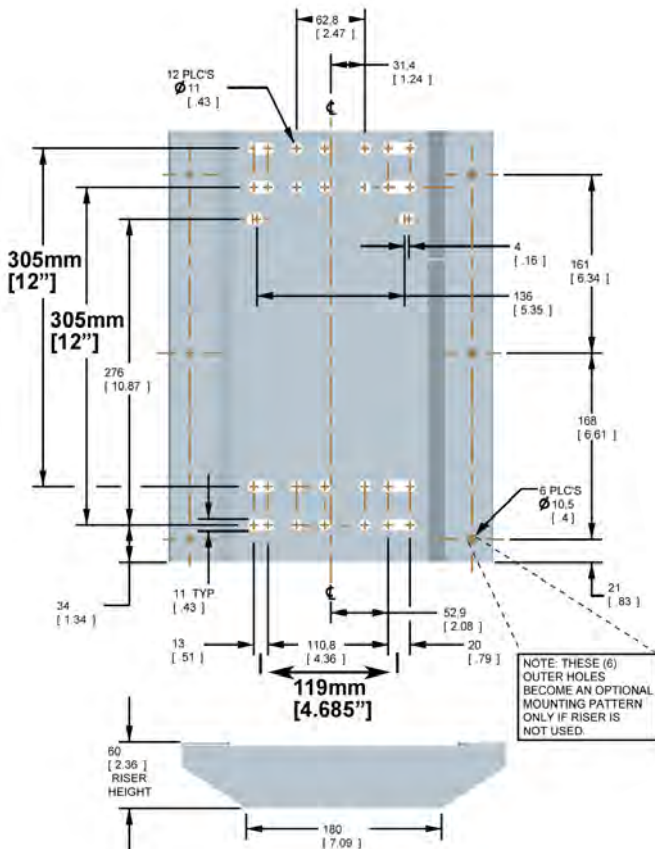


KNOEDLER
MANUFACTURIERS CANADA, LTEE



NOTE:

If you opted for the 2" lower seat, then subtract 2" from the height dimensions shown above.



WARNING: It is the responsibility of the installer to determine the suitability for use of this product in each application. Any drawings shown in this document are for reference purpose only.

The installer is responsible to ensure that proper seat mounting hardware and mounting channels (when required) and seat belt and tether belt anchorages are used according to requirements of the Federal motor vehicle safety standards. Use only high strength fasteners and heavy duty washers and tether belts when installing the seat assembly.

WARNING: Serious injury may occur if head clearance is not adequate. After installing seat and before riding or driving the vehicle, ensure there is adequate head clearance at maximum upward travel of seat. In order to reach the highest position of the seat, while sitting in seat, slowly raise the seat to its maximum height by actuating the suspension air control valve.

WARNING: This seat has been tested on a flat floor and conforms to Federal Motor Vehicle safety standards (FMVSS) 207 and 302 at time of manufacture using correct hardware and tether belt mounting.

WARNING: Seat belts need to be worn at all times when operating a vehicle.

WARNING: Injury or damage to the seat may occur if seat and seat suspension are not kept free of interference of objects near or around the seat; if not kept free of debris or foreign material.