



# AIR-CHIEF

## Extreme Low-Rider

### Extreme Low Profile Air-Seat

- Max Inflated Seat height from floor to Top of seat cushion is 11.5" in Std Configuration

#### Standard Features:

- Ergonomic Cushion Design Technology
  - o Contoured seat and back foams for good support.
  - o 20.5" wide Ergonomic Cushions
  - o FAS (Foam Adjustment System)
    - o 4-Way Air lumbar support system
    - o Side-Bolster Adjustment System
- Fully Reclining Backrest
- Fore & aft slide Adjustment
- HD Extreme Low Profile Suspension Syst
  - o Poly-Dynamic Air-Suspension™
- 3" Susp Stroke (options available up to 7")  
(For more details see back side)

#### Options:

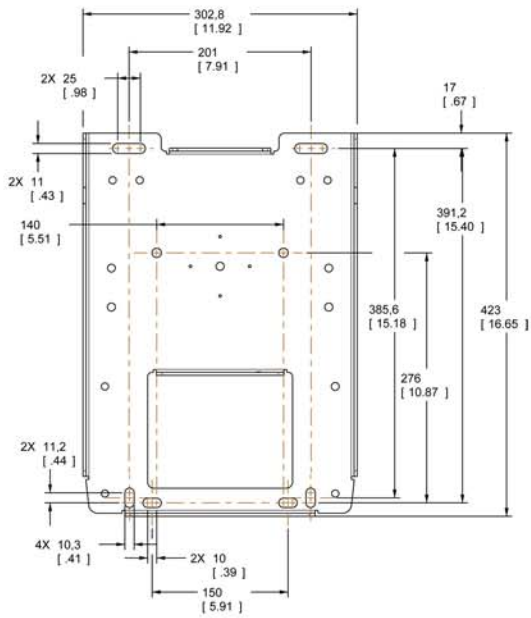
- Front Adjustable Armrests
- Integrated Isolator (Fore & Aft)
- 12V/24V Volt Integrated Compressor
- Special request, contact us.



Part # Shown: 98SC-L62MH0S15

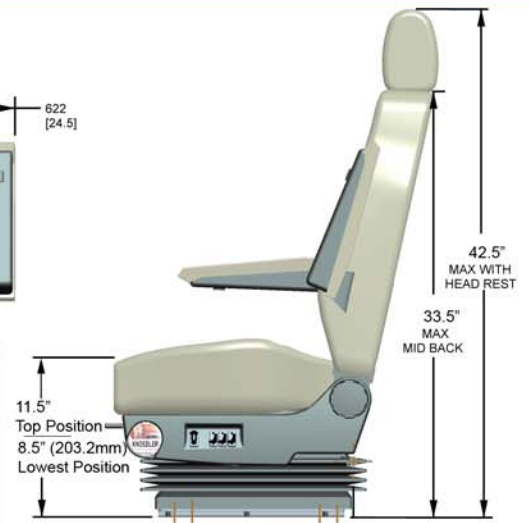
Customer Service:  
450-445-4777  
Fax: 450-445-0086

[www.knoedler.com](http://www.knoedler.com)



MOUNTING DIMENSIONS AS SEEN FROM ABOVE

FRONT ▼



**NOTE:** It is the responsibility of the installer to determine the suitability for use of this product in each application. The drawings are for reference purpose only

**Poly-Dynamic Air-Suspension System™:**

It combines the “isolator suspension” (fore & aft suspension) with the “air-suspension” system (vertical suspension).

**Advantages:**

- Improved performance as both directions of the suspension are coherently integrated and therefore work together as one.
- Increased Comfort:

As the ICP’s (Inter Connecting Points) of the lower 2 seat-belt-mounting points move with both the vertical suspension and the isolator suspension during normal operation. And therefore there are no relative movements between the seat belt and the body of the seat occupant.

This improves comfort of wearing a seat belt and therefore encourages seat belt use.

- Less moving parts and therefore more stability and longer life cycles.
- Less noise: No rattling of the slide mechanism.

**WARNING:** Serious injury may occur if head clearance is not adequate. After installing seat and before riding or driving the vehicle, ensure there is adequate head clearance at maximum upward travel of seat. In order to reach the highest position of the seat, while sitting in seat, slowly raise the seat to its maximum height by actuating the suspension air control valve.

Part Number	Description
98SC-L50MB(XXXX)	3" SUSP.STROKE - Mid Back
98SC-L50MH(XXXX)	3" SUSP.STROKE - Mid Back & Headrest
98SC-L52MB(XXXX)	3" SUSP. STROKE -Mid Back -Isolator
98SC-L52MH(XXXX)	3" SUSP.STROKE - Mid Back & Headrest -Isolator

**WITH Arms**

98SC-L60MB(XXXX)	3" SUSP.STROKE - Mid Back -Arms
98SC-L60MH(XXXX)	3" SUSP.STROKE - Mid Back & Headrest -Arms
98SC-L62MB(XXXX)	3" SUSP.STROKE - Mid Back - Arms- Isolator
98SC-L62MH(XXXX)	3" SUSP.STROKE - Mid Back & Headrest - Arms - Isolator

**SELF CONTAINED SUSPENSION (with INTEGRATED Compressor)**  
--- Extreme LOW PROFILE APPLICATIONS ---

Part Number	OPTIONS
98SS-L50MB(XXXX)	3" SUSP.STROKE - Mid Back - Compressor
98SS-L50MH(XXXX)	3" SUSP.STROKE - Mid Back & Headrest - Compressor
98SS-L52MB(XXXX)	3" SUSP. STROKE - Mid Back -Isolator - Compressor
98SS-L52MH(XXXX)	3" SUSP.STROKE - Mid Back & Headrest -Isolator - Compressor

**WITH Arms**

98SS-L60MB(XXXX)	3" SUSP.STROKE - Mid Back - Arms - Compressor
98SS-L60MH(XXXX)	3" SUSP.STROKE - Mid Back & Headrest - Arms -Compressor
98SS-L62MB(XXXX)	3" SUSP.STROKE - Mid Back - Arms - Isolator - Compressor
98SS-L62MH(XXXX)	3" SUSP.STROKE - Mid Back & Headrest - Arms - Isolator - Compressor

**AIR-CHIEF**  
**Extreme Low-Rider**

	UPHOLESTRY (XXXX)				
	Tweed	Soft Leather	Heated		
Black	OX01	OS01	Two Tone	HS01	Two Tone
Brown	OX02	OS02	OS12	HS02	HS12
Tan		OS03	OS13	HS03	HS13
Grey	OX05	OS05	OS15	HS05	HS15
Red	OX06	OS06	OS16	HS06	HS16

[www.knoedler.com](http://www.knoedler.com)